

# Beta ( $\beta$ ) thalassaemia

## What is Beta ( $\beta$ ) thalassaemia?

Thalassaemia is a group of blood disorders affecting haemoglobin production. Haemoglobin is a protein in the blood that carries oxygen around our bodies.

Thalassaemia is passed from parent to child in genes. Genes carry information about human characteristics such as eye colour, hair colour and haemoglobin.

**Thalassaemia is inherited.**

**Thalassaemia is not contagious.**

**Thalassaemia is not transmitted by germs.**

Sometimes changes occur to genes, resulting in medical conditions. Such changes occur to beta globin genes in beta ( $\beta$ ) thalassaemia:

- A person normally inherits two  $\beta$  globin genes for the production of the beta globin protein in haemoglobin.
- A person may have an alteration (mutation) in one of their two  $\beta$  globin genes. This person is called a **carrier of  $\beta$  thalassaemia** and is healthy. Doctors may use the term  **$\beta$  thalassaemia minor** instead but it means the same thing.
- Carriers may be at risk of having a child affected with beta thalassaemia major if their partner is also a carrier of  $\beta$  thalassaemia.
- When a person has alterations (mutations) in both of their  $\beta$  globin genes, they have a severe condition called  $\beta$  thalassaemia major.  $\beta$  thalassaemia major results in severe anaemia requiring life long treatment.

## Treatment for $\beta$ thalassaemia major

Those with  $\beta$  thalassaemia major require regular blood transfusions every 3 to 4 weeks to correct anaemia. Complications of their treatment include accumulation of excess iron, which can be effectively prevented and managed with medication.

## The health of carriers of $\beta$ thalassaemia

A carrier can expect to be healthy. It is important that their doctor knows they are a carrier to distinguish any anaemia from anaemia caused by low iron levels.

## Beta thalassaemia and family planning

The genes for  $\beta$  thalassaemia are common in people of Middle Eastern, Mediterranean, Indian sub-continent and South-East Asian backgrounds.

Couples planning a family, or early in pregnancy, should have a blood test to determine whether or not they are carriers, if the origin of either of their families is one of the areas listed above; or if they have a family history of any blood disorder or anaemia. This test is needed to determine if there is any risk of having a child affected by a genetic blood disorder.

Those at risk of having an affected child have options. This condition can be diagnosed as early as the 12th week of pregnancy. Termination of pregnancy can then be considered, if appropriate. People can adopt or can consider assisted reproductive techniques (such as preimplantation genetic diagnosis, the use of donor eggs or donor sperm). Others may choose to take the chance of having an affected child. All of these options can be discussed with a Genetic Counsellor.

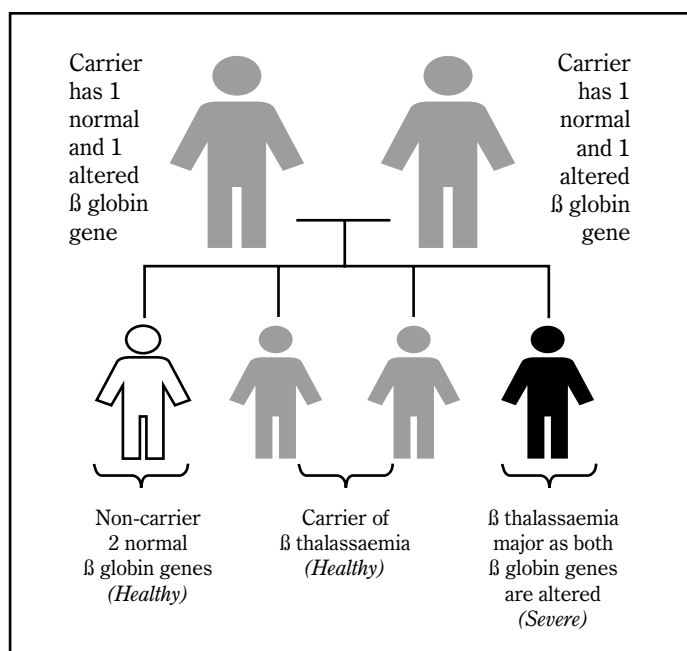
Testing can be arranged by your local doctor or by contacting the hospitals listed at the end of this pamphlet.

## Important information for your family

If you are a carrier of beta thalassaemia, other members of your family may also be carriers and at risk of having children with a severe blood condition. It is recommended that other family members **and** their partners be tested for their carrier status **prior** to having children of their own.

# Chances of having a child affected with $\beta$ thalassaemia major

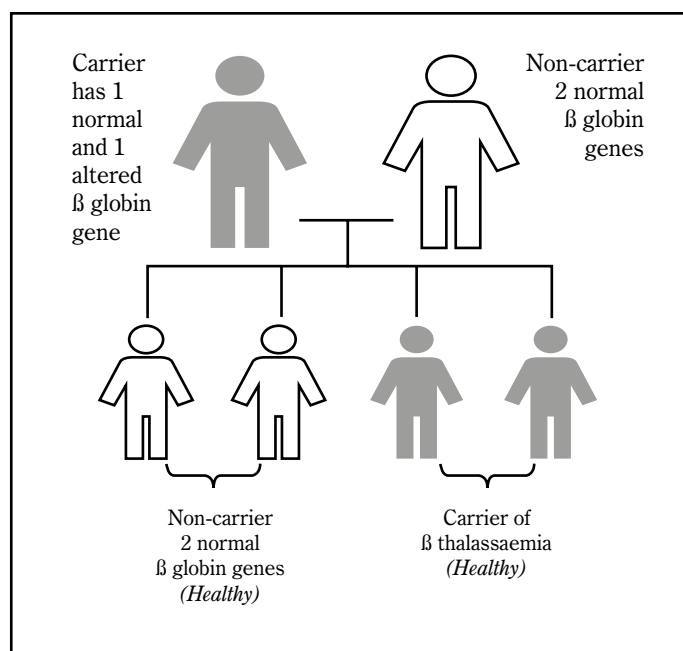
**Figure 1:**  
Both parents are carriers of  $\beta$  thalassaemia



With **each** pregnancy, this couple has a:

- 1 in 4 chance of having a child with 2 normal  $\beta$  globin genes.
- 2 in 4 chance of having a carrier of  $\beta$  thalassaemia.
- 1 in 4 chance of  $\beta$  thalassaemia.

**Figure 2:**  
Only one parent is a carrier of  $\beta$  thalassaemia



With **each** pregnancy, this couple has a:

- 2 in 4 chance of having a child with 2 normal  $\beta$  globin genes.
- 2 in 4 chance of having a carrier of  $\beta$  thalassaemia.

This fact sheet has been translated into a number of different languages and they are available to download at [www.thalassaemia.org.au](http://www.thalassaemia.org.au)

## Useful contacts

### Treatment Centres:

**Mater Adult Hospital**  
Day Oncology Unit  
10 A, Level 10  
Raymond Terrace,  
South Brisbane, QLD 4101

Phone: +61 7 3163 1952  
Fax: + 61 7 3163 3429

**Mater Children's Hospital**  
Medical Day Unit  
Level 7 East  
Raymond Terrace  
South Brisbane, QLD 4101

Day Unit Ph: +61 7 3163 8707  
8.30am-5.00pm Wed & Fri ONLY

7 East Ward  
Ph: +61 7 3163 8388 or + 61 7 3163 8551  
8.30am-5.00pm Mon, Tues,  
Thurs, Sat & Sun  
[www.mater.org.au](http://www.mater.org.au)



Thalassaemia Australia Inc.  
333 Waverley Road  
Mount Waverley VIC  
AUSTRALIA 3149

Phone: +61 3 9888 2211  
Fax: +61 3 9888 2150  
Email: [info@thalassaemia.org.au](mailto:info@thalassaemia.org.au)  
Website: [www.thalassaemia.org.au](http://www.thalassaemia.org.au)